

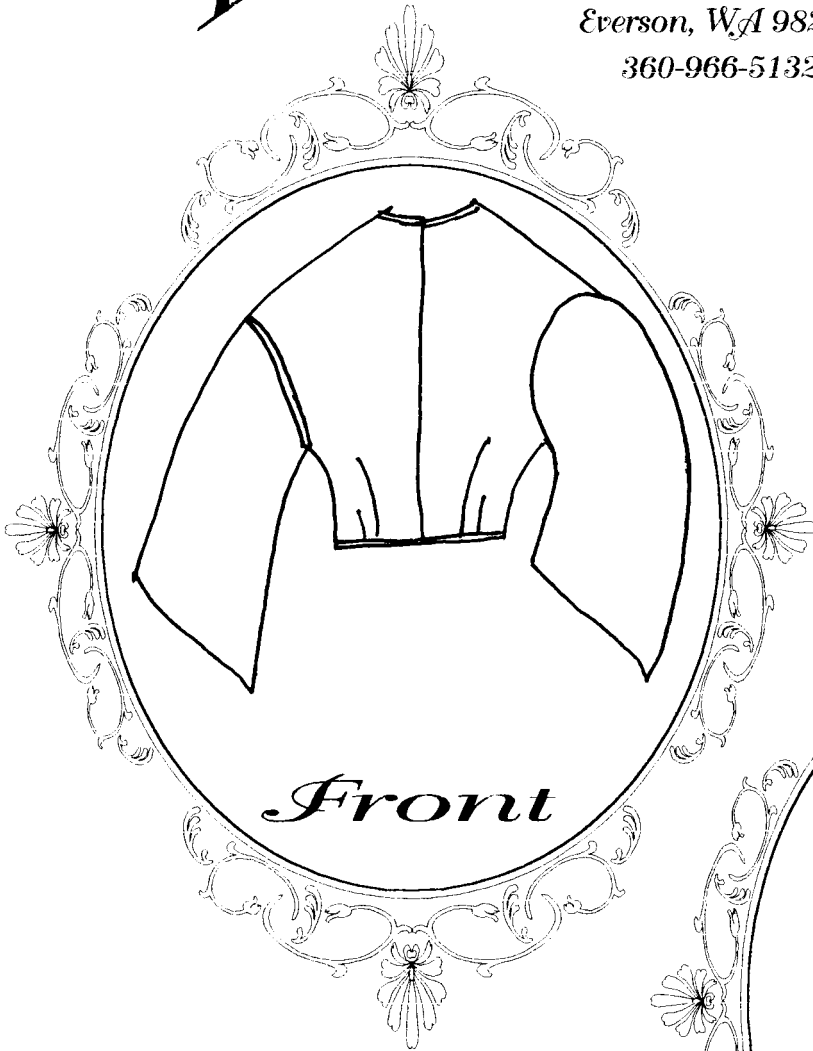
Timeless Stitches

Lynne Harriman

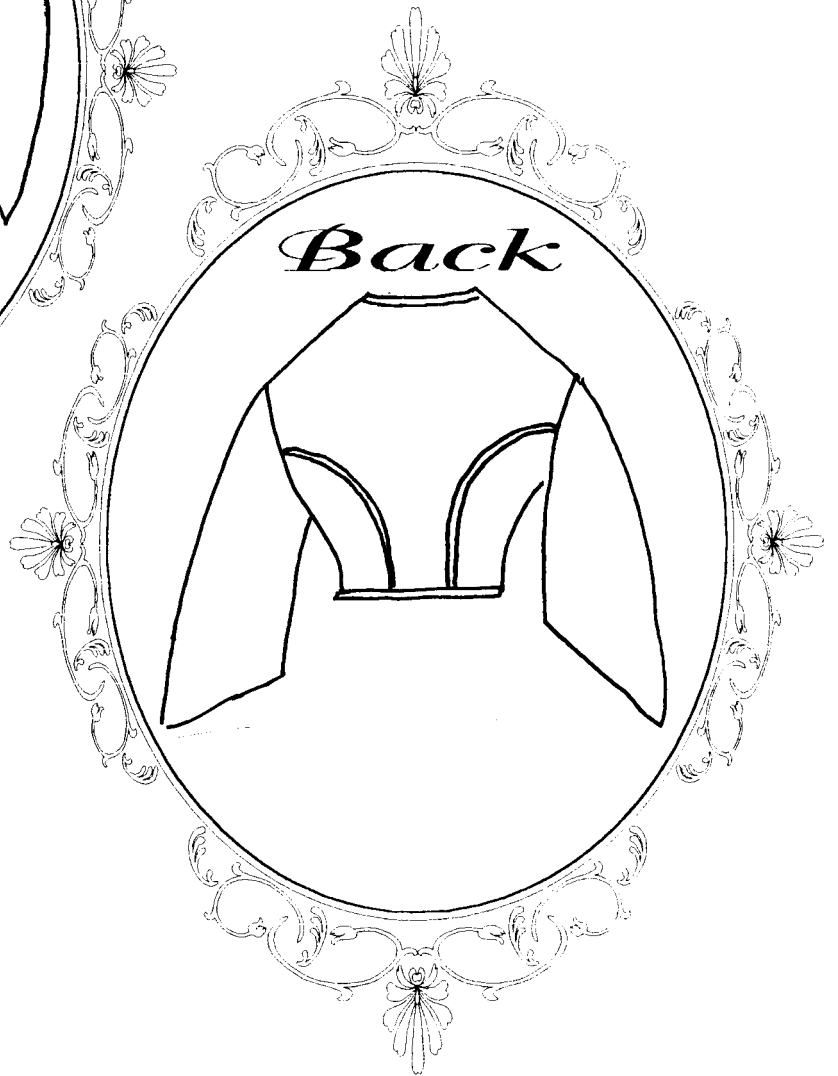
7060 Joy Rd

Everson, WA 98247

360-966-5132



Front



Back

TSB-100

Basic Fitted Bodice

Basic Fitted Bodice

TSB-100

The fitted bodice was the most common bodice of the 1860's. It is fitted tight to the body with vertical darts in the front and the curved lines of the back. This bodice pattern is for a jewel neck bodice with modified pagoda sleeve. It is a style that was worn by women of all ages. When combined with a *Timeless Stitches* skirt pattern makes a perfect daydress or camp dress. Try TSS-201 Double Opening Skirt, TSS-202 Gauged Skirt or TSS-203 Gored Skirt .

Key features of the Bodice include:

- long shoulder seams fall towards the back of the shoulder and side seams are towards the back
- bodice fastened in the center front (instructions for easy hook and eye tape installation included)
- armseye shaped to appear diagonal and sewn with piping
- sleeves are cut full at the elbow

The bodice is designed to be worn with detachable collar and sleeve "jockeys." (Look for *Timeless Stitches* patterns TSA-501 Sleeve Jockeys and Cuffs and TSA-502 Chemisettes and Collars.). TSA-500 Sleeve Options offers different sleeve styles and trim ideas can be used instead of the modified pagoda sleeve included with this pattern.

Sizing:

The pattern includes four sizes: Small, Medium, Large and X-Large.

Suggested fabric and trims:

Your fabric will depend on your planned use. Campdress are usually made from 100% cotton or a poly/cotton blend. A day dress can be made from any of the cottons, flannels, silks, rayon, wool and blends that are available today. You can use calicos, solids, stripes, dots (what we now call polka dots) and small florals. As with most patterns more fabric will be required if you choose directional prints or fabrics that require matching. Choose 100% cotton trims where possible. Eyelet and flat laces work great for a soft look. Grossgrain ribbons, packaged bias tapes and braids work well. When choosing your trims please keep in mind that the garment is sewn with self-fabric bias piping (instructions are included in the pattern). You will want to consider your skirt trim when deciding on trim for your bodice.

Pattern Requirements: 2 1/2 yards 45" wide fabric * 3 1/2 of fabric and lining for x-large size)
2 1/2 yards 45" lining
18" of hook and eye tape/ or 9 buttons for optional button and holes
fine cord for your piping (cotton string works well)
Trims of your choice.

You will also require: fabric punch or awl ,good fabric marking pencil (one that washes out)



Timeless Stitches

Lynne Harriman

7060 Joy Rd. Everson, WA 98247 (360) 966-5132

www.tstiches.com

Copyright © 1999 Timeless Stitches

All Rights Reserved