

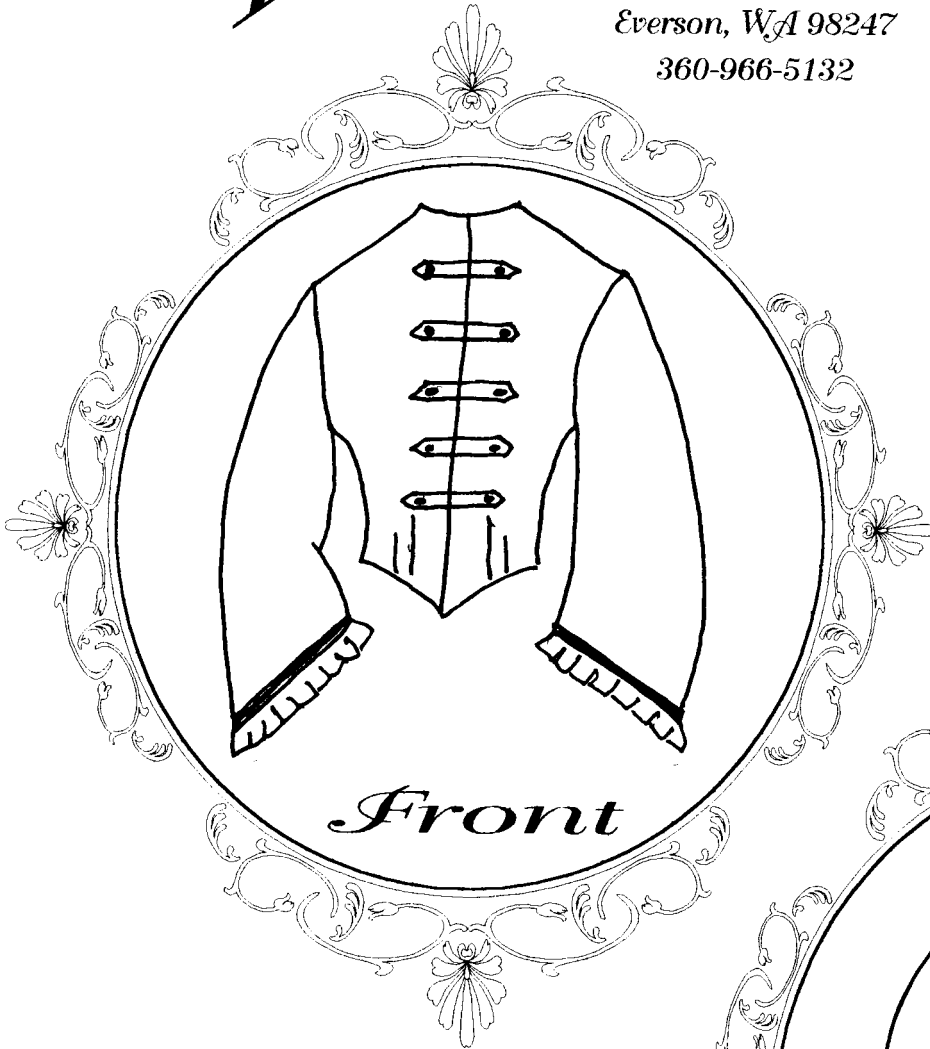
Timeless Stitches

Lynne Harriman

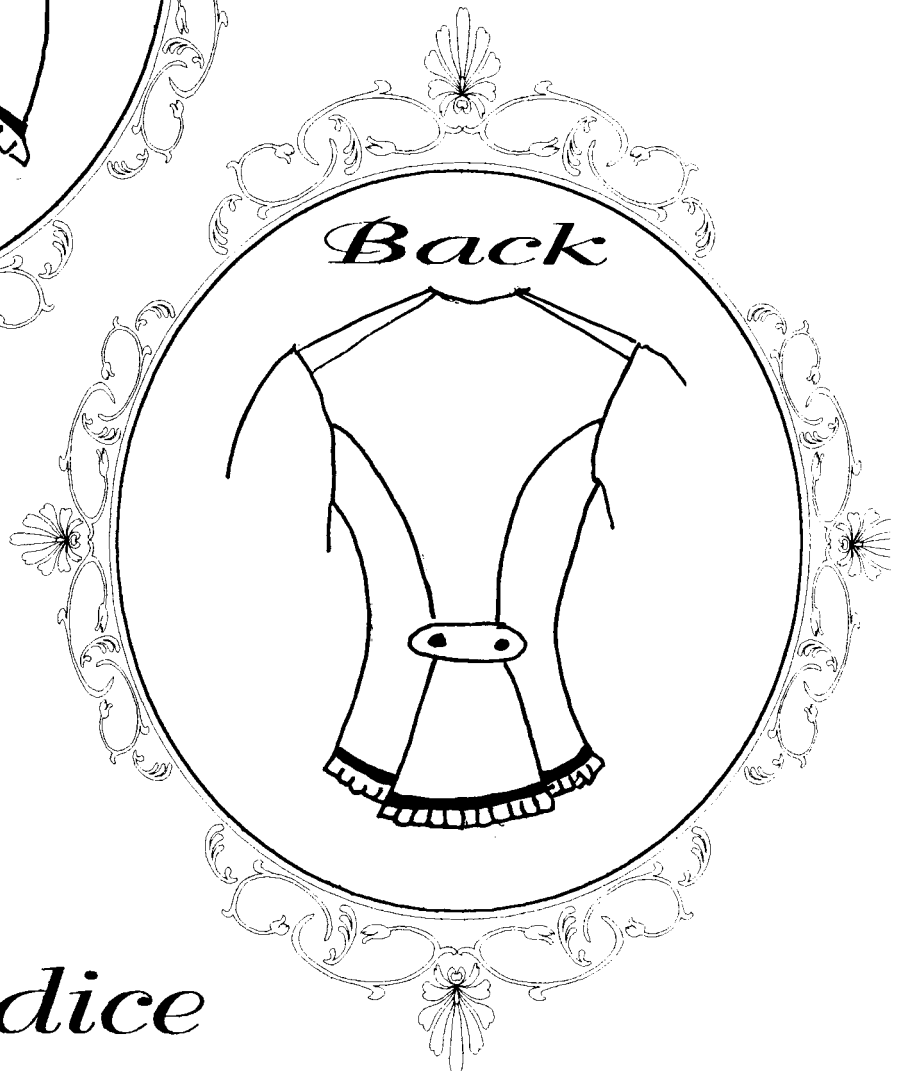
7060 Joy Rd

Everson, WA 98247

360-966-5132



Front



Back

TSB-103

Tea Bodice

Tea Bodice

TSB-103

Tea Bodices were worn to “take Tea” which often meant an afternoon of visiting. Tea Bodices were designed to “be seen” in and thus were fancier than a day dress. This pattern has a fitted front that falls to a point over the waistband of your skirt and a peplum back. The bodice has a jewel neckline with pagoda sleeves. The sleeves and peplum are designed to be trimmed with a self-fabric pleated ruffle. The bodice can be fastened at the front with your choice of three optional closings. This is a very dressy and flattering style.

When combined with a *Timeless Stitches* skirt this pattern makes a perfect outfit. Try TSS-201 Double Opening Skirt, TSS-202 Gauged Skirt or TSS-203 Gored Skirt. The bodice is designed to be worn with detachable collar and sleeve “jockeys.” (Look for *Timeless Stitches* patterns TSA-501 Sleeve Jockeys and Cuffs and TSA-502 Chemisettes and Collars.). TSA-500 Sleeve Options offers different sleeve styles and trim ideas can be used instead of the pagoda sleeve included with this pattern.

Sizing: The pattern includes four sizes: Small, Medium, Large and X-Large.

Suggested fabric and trims:

Single fabric ensembles were the normal. Many seamstresses used the trick of trimming the bodice and skirt with a second fabric to stretch the available fabric to meet their needs. This bodice offers a perfect opportunity to do just that. The sleeve and peplum ruffle and the peplum lining fabric could be the same fabric as a stripe or hem guard on your skirt. Your fabric will depend on your planned use. Tea dresses can be made from any of the cottons, flannels, silks, rayon, wool and blends that are available today. You can use calicos, solids, stripes, dots (what we now call polka dots) and small florals. As with most patterns more fabric will be required if you choose directional prints or fabrics that require matching. Choose 100% cotton trims where possible. Eyelet and flat laces work great for a soft look. Grossgrain ribbons, packaged bias tapes and braids work well. When choosing your trims please keep in mind that the garment does have a self-fabric ruffle, so lots of lace is not necessary. You will want to consider your skirt trim when deciding on trim for your bodice.

Pattern Requirements:

2 1/2 - 3 yards 45” wide fabric

2 yards 45” lining

10 buttons for front / 2 for optional belt *

cotton cord for piping or purchased piping

choice of trims

* number of buttons depends on optional closure



Timeless Stitches

Lynne Harriman

7060 Joy Rd. Everson, WA 98247 (360) 966-5132

www.tstitches.com

Copyright © 1999 Timeless Stitches

All Right Reserved