

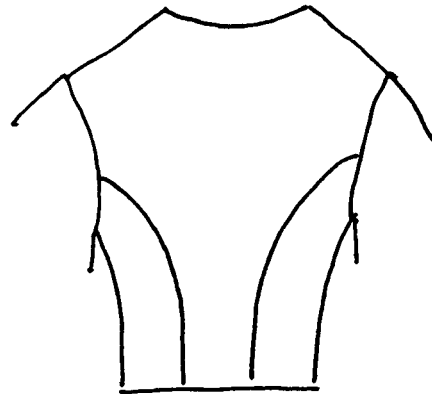
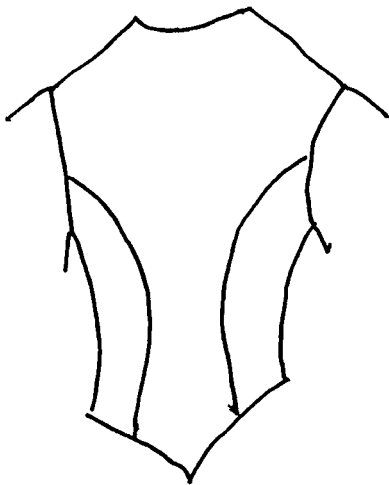
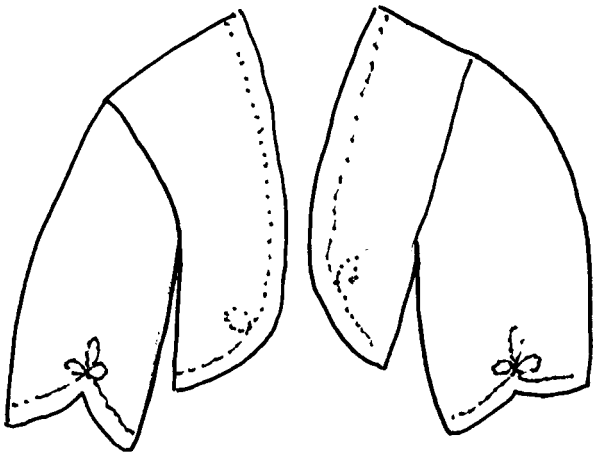
Timeless Stitches

Lynne Harriman

7060 Joy Rd

Everson, WA 98247

360-966-5132



TSB-105

Zouave Jacket

Zouave Jacket

TSB-105

One of the most common jackets worn during the Era, the Zouave Jacket is a great addition to any wardrobe. Worn originally as a show of Patriotism, the Zouave Jacket, fast became the Jacket of choice. The first Jackets were black with red trim but the style soon progress to many color and fabric combinations, but the trim color was mainly black. Ensembles including Zouave jackets can be worn for any outdoor wear including riding habits. This pattern is for two styles of Zouave Jacket: the open jacket which does not join at the neckline and the closed jacket which clasps at the neck. The pattern has two styles of jacket back, the straight back which was worn early on the 1860's and the pointed back which came a little later. The pattern also includes three sleeve options: a straight sleeve, a sleeve with cuff and a pointed sleeve. All of the pattern options are interchangeable.

Suggested Fabrics and Trims:

Zouave Jacket ensembles are the exception to the single fabric outfit rule. Young women often wore Zouave Jackets that complimented rather than matched their skirts, with red and black being popular choices. The older women tended to make their Jackets out of the same fabric as their skirts. Zouave Jackets can be made with anything form lightweight cottons for summer wear to heavy wool and blends for those colder days. The trims were often military in style. Included is an information sheet TSI-902 Braid and Trim options to help you personalize your jacket.

Sizing:

The pattern includes four general sizes: Small, Medium, Large and X-large. Fitting Jackets can be tricky so I have included helpful hints on how to make the perfect jacket for your figure.

Complimentary Patterns:

Zouave Jackets and a coordinating skirt make great outfits. *Timeless Stitches* pattern TSS-203 Gored Skirt works very well, as the tailored lines of the Gored skirt compliment the tailored look of the Jacket. *Timeless Stitches* pattern TSB-120 Tucked Body is a great "blouse" pattern for under your Jacket. *Timeless Stitches* TSB-111 Sleeveless Jacket (Vest) fits well under the Zouave Jacket to finish your overall look and add warmth to an outfit. You might want to consider making a Zouave Jacket out of the same fabric as your fitted bodice and skirts, adding an extra outfit to your wardrobe.



Timeless Stitches

Lynne Harriman

7060 Joy Rd. Everson, WA 98247 (360) 966-5132

Copyright © 1999 Timeless Stitches