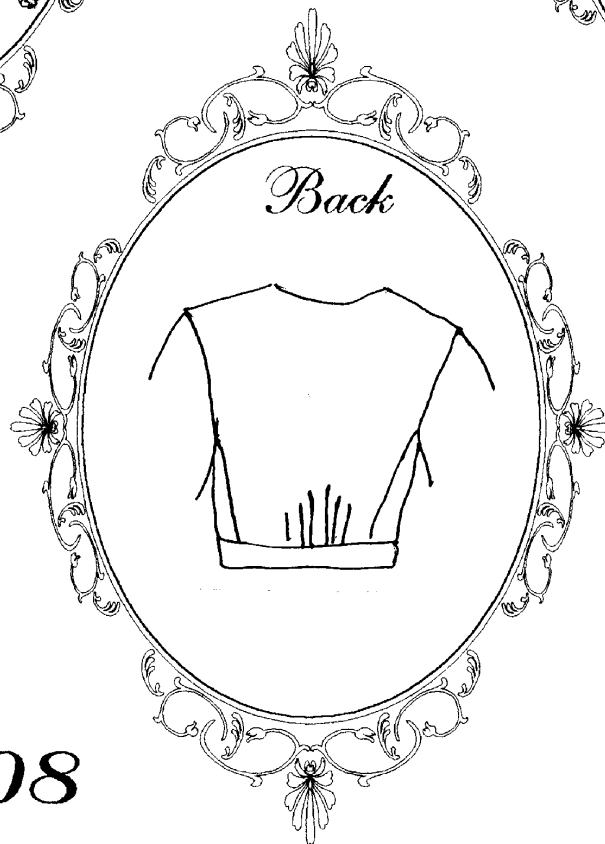
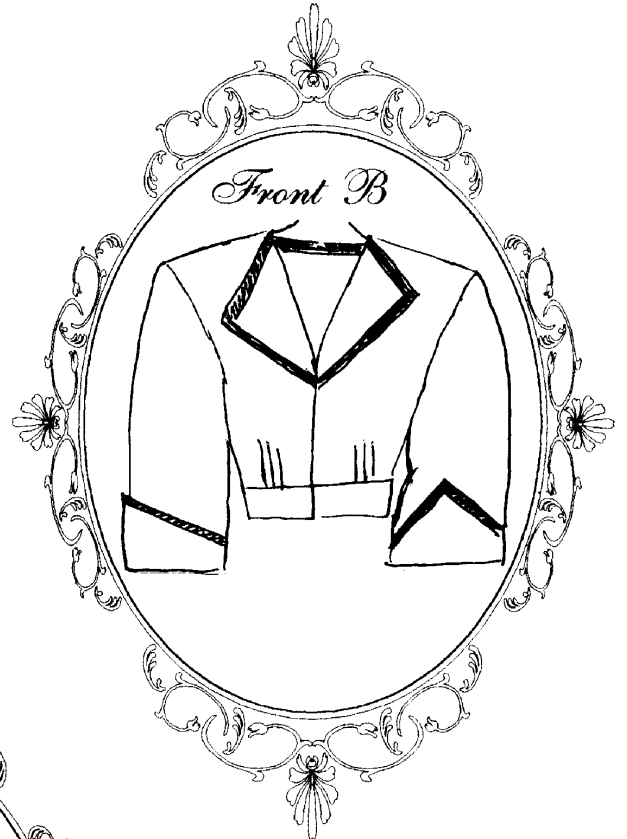
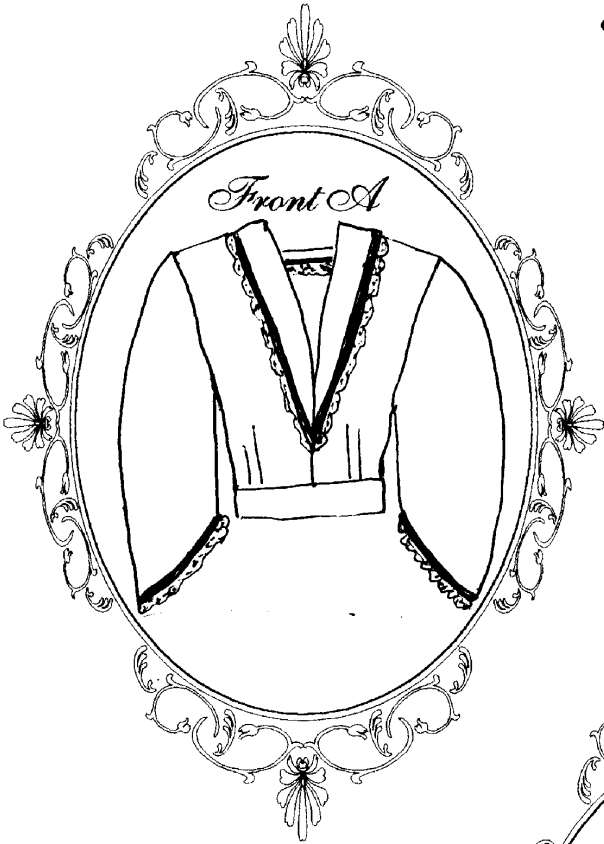


Timeless Stitches

Lynne Harriman

7060 Joy Rd
Everson, WA 98247

360-966-5132



TSB-108

Wrap Bodice

Wrap Bodice

TSB-108

This pattern is for a simple but dressy bodice that combines many of the features of bodices of the Era. The bodice is not tight fitting; instead it utilizes small pleats along the waistline to give it shape and structure. This is a great bodice to start your Civil War sewing, as it is one of the easiest to make and fit, while giving you the basic sewing techniques for garments of the Era. The bodice is designed so it can either be tucked into your skirt or placed on a waistband that is worn inside your skirt. The Bodice also has two collar options a smooth shawl collar or a “revers” or fold over collar. Both can be trimmed with laces, ruffles or handwork, many ideas for which are included in this pattern. The modified pagoda sleeves can be made in either of the two options: cuffs or plain. The bodice is designed to be worn with detachable collar and sleeve “jockeys.” The pattern includes a pattern for the insert for the neckline.

While simple to sew, this is one of the most flattering and easily adaptable bodices.

When combined with a *Timeless Stitches* skirt, this pattern makes a perfect outfit. Try **TSS-201 Double Opening Skirt**, **TSS-202 Gauged Skirt** or **TSS-203 Gored Skirt**. **TSS-206 Split Skirt with underskirt** and this bodice make a wonderful dressy outfit for a party. It is the perfect outfit for teenage ball gowns.

Sizing: The pattern includes four sizes: Small, Medium, Large and X-Large.

Size	S(mall)	M(edium)	L(arge)	X-L(arge)
Bust	34"	38"	42"	48"
Waist	32"	35"	40"	46"

Suggested fabric and trims:

Single fabric ensembles were the normal. Many seamstresses used the trick of trimming the bodice and skirt with a second fabric to stretch the available fabric to meet their needs. This bodice offers a perfect opportunity to do just that. The sleeve cuff and the collar could be the same fabric as a stripe, ruffle or hem guard on your skirt or your underskirt. Your fabric will depend on your planned use. Dresses can be made from any of the cottons, flannels, silks, rayon, wool and blends that are available today. You can use calicos, solids, stripes, dots (what we now call polka dots) and small florals. As with most patterns more fabric will be required if you choose directional prints or fabrics that require matching. Choose 100% cotton trims where possible. Eyelet and flat laces work great for a soft look. Grosgrain ribbons, packaged bias tapes and braids work well. When choosing your trims please keep in mind that the garment can use a self-fabric ruffle, so lots of lace is not necessary. You will want to consider your skirt trim when deciding on trim for your bodice.

Pattern Requirements:

2 1/2 - 3 yards 45” wide fabric, similar amount for lining

Cotton cord for piping or purchased piping

Choice of trims



Timeless Stitches

Lynne Harriman

7060 Joy Rd. Everson, WA 98247 (360) 966-5132

www.tstitches.com

Copyright © 1999 Timeless Stitches - All Rights Reserved