

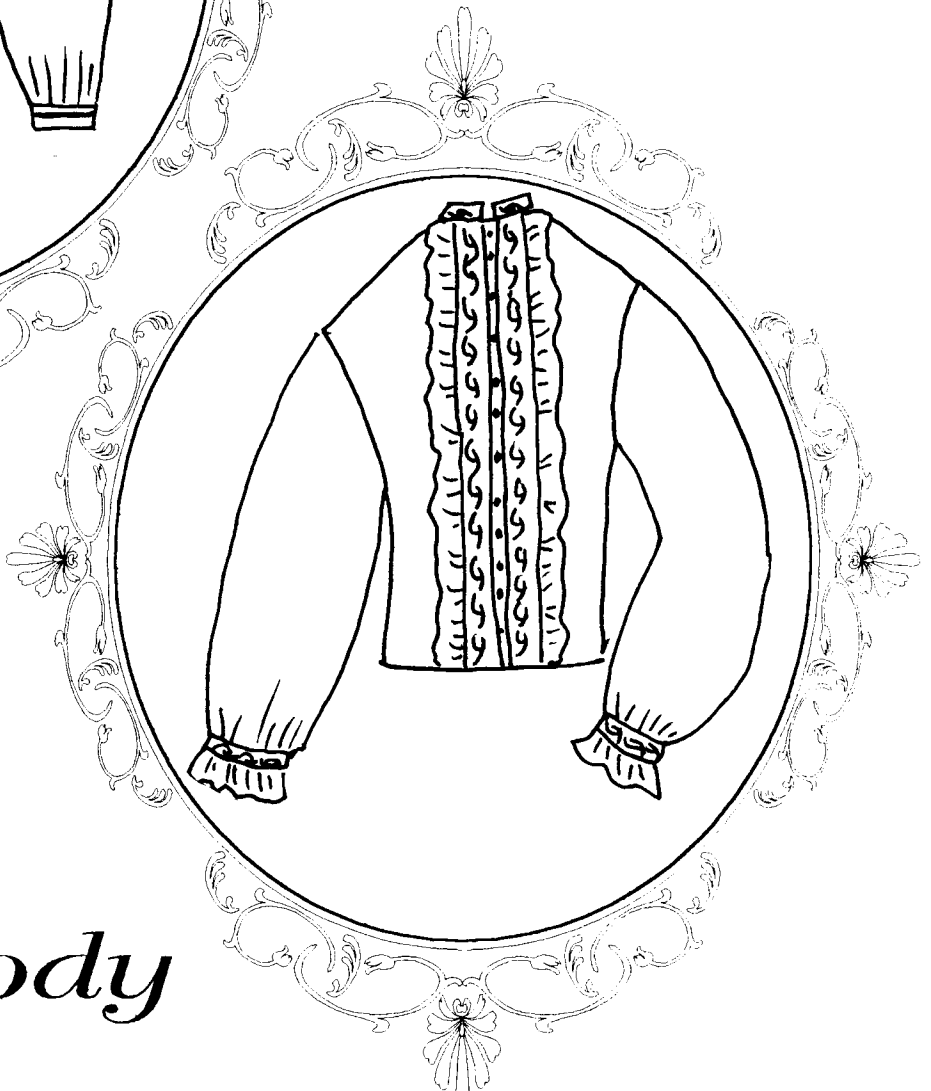
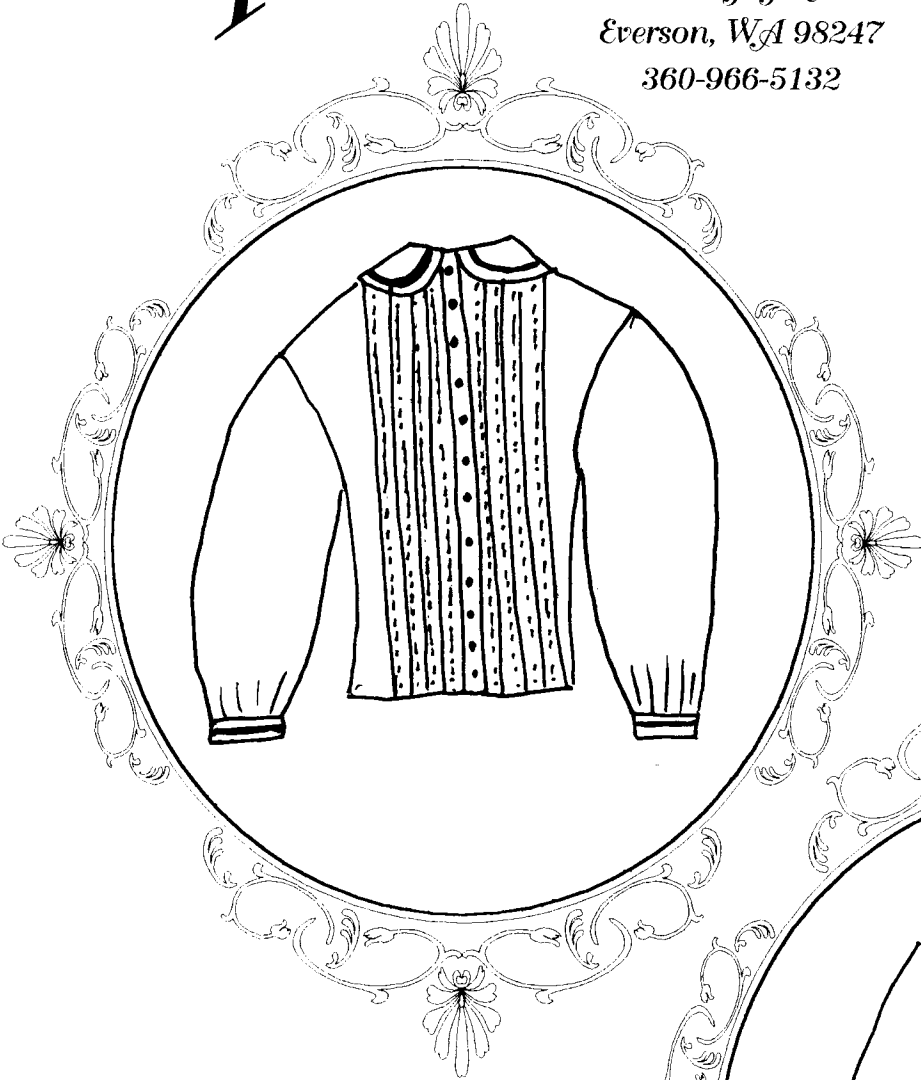
Timeless Stitches

Lynne Harriman

7060 Joy Rd

Everson, WA 98247

360-966-5132



TSB- 120

Tucked Body

Tucked Body

TSB-120

A must have for every wardrobe !

Every lady had her Bodies or as we know them today blouses. Plain white ones were worn under Zouave Jackets, Swiss Bodies and Vests. Fancy, lace trimmed ones were worn with pretty skirts. Almost every issue of Godey's Ladies Magazine had a new style of Body. Many were elaborately trimmed and hand stitched allowing the wearer to show off her needlework skills. This pattern is for a Body that tucks into the skirt. The pattern can be made plain or with the addition of laces, trims and /or pin tucking can be worn as a bodice. The unique design of the pattern allows for elaborate trim work without the worry of how it is going to affect the size of the pattern. The pattern includes three neckline and collar choices as well as two cuff options. Bodies are a very economical and easy way of extending your wardrobe, and wonderful to wear on those hot summer days.

Suggested Fabrics and Trims:

Your fabric choices can include cottons and many of the cotton blends that are available today. Batiste, challis, percale, chambray and lawn are all suitable weaves of fabric. Most of the Bodies were made in solid colors with white being the color of choice. A simple plain bodice can be made in a calico fabric to match a skirt and worn as a camp dress.

The choice of trims depend on the desired use of your garment. Your trim choices range from pin-tucks and self-fabric ruffles to lace inserts and trims of braid and ribbon. *Timeless Stitches* information sheet TSI-902 Braid and Trim options may help to give you some alternative ideas to the 4 pages of trim options and instructions included in the pattern.

Sizing:

The pattern includes four general sizes: Small, Medium, Large and X-large.

Complimentary Patterns:

This is a great pattern to go under *Timeless Stitches* Zouave Jacket TSB-105 and *Timeless Stitches* pattern TSB-111 Sleeveless Jacket (Vest) pattern. The Body, when trimmed with lace and tucks can also be worn as a bodice with any of the *Timeless Stitches* skirt patterns (try TSS-101 Standard Double Opening Skirt).

Pattern Requirements:

3- 3 1/2 yards 45" fashion fabric

Optional trims of your choice

1 yard 1/8" cotton cording for self-piping or purchased piping in the same color as garment

12 small buttons

fabric marking pencil, preferably one that washes out



Timeless Stitches

Lynne Harriman

7060 Joy Rd. Everson, WA 98247 (360) 966-5132

www.tstitches.com

Copyright © 1999 Timeless Stitches

All Rights Reserved