

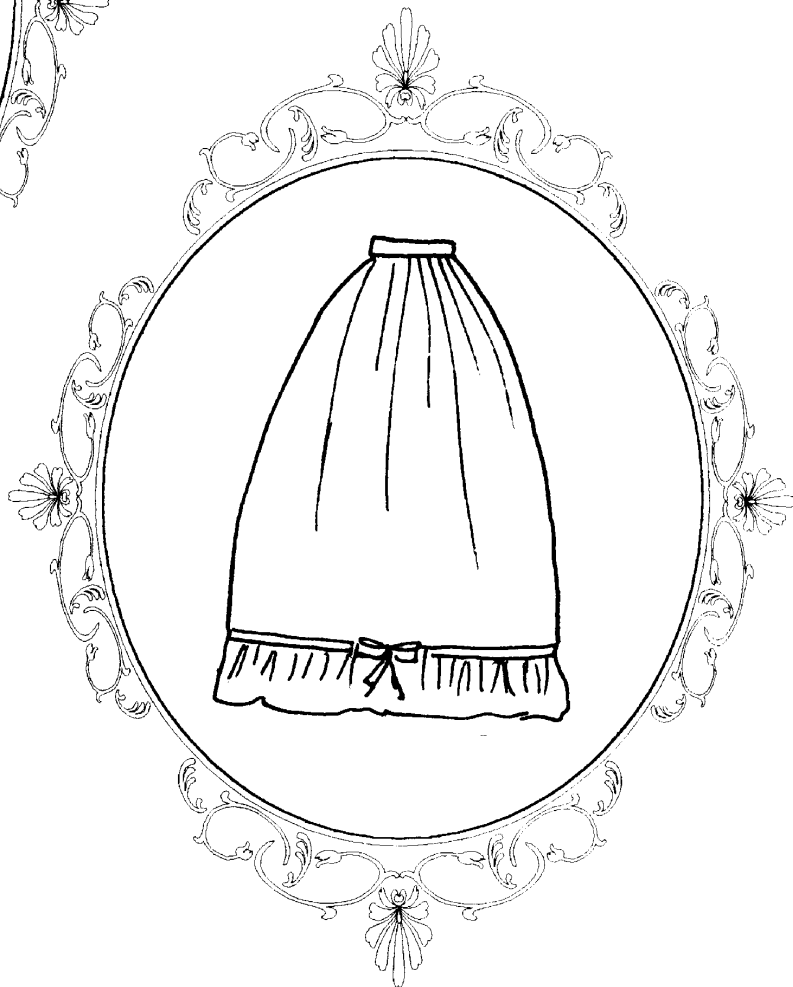
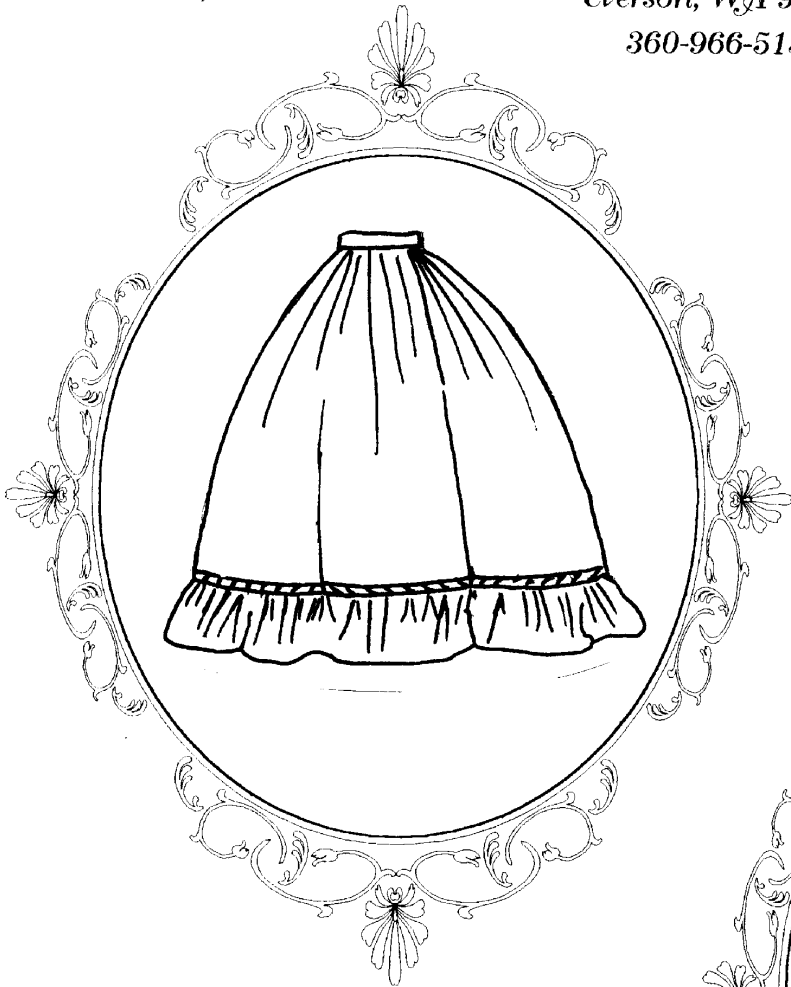
Timeless Stitches

Lynne Harriman

7060 Joy Rd

Everson, WA 98247

360-966-5132



TSU-010

Petticoat

Petticoat

TSU-010

This pattern is for a single ruffled petticoat. The pattern includes instructions for both under and over the hoop petticoats. Petticoats were worn over the hoops to prevent the individual hoops from showing, and under the hoops for warmth. The pattern utilizes a waistband front and a drawstring back, which helps reduce the bulk of fabric at your waistline.

Sizing:

The drawstring back of this pattern makes it truly adjustable. The choice of the number of panels used makes this an easily adaptable pattern for all waistlines and hoop sizes. The pattern is for 40 inch length but instructions are included to lengthen or shorten as required.

Suggested fabric and trims:

Petticoats were made of many fabrics with cotton and flannel being the most common for every day wear. Almost all underpinnings were white. The ecru we see in museums today, is from age, not color. Many fancy petticoats were made of taffeta. With red and black being the color of choice.

To be historically correct your trims should be 100% cotton. Look for eyelet and flat laces that are not glossy in appearance. Eyelet and ribbon combinations work great. It is not a good idea to put lots of lace on the lower edge of your petticoat as this acts as a grass catcher. If you really want trim the best place to install it is at the join between panel and ruffle.

Pattern Requirements: 3-5 yards fabric depending number of panels
grossgrain ribbon if desired for drawstring
Trims of choice



Timeless Stitches

Lynne Harriman

7060 Joy Rd. Everson, WA 98247 (360) 966-5132

www.tstitches.com

Copyright © 1999 Timeless Stitches

All Rights Reserved